



SATISH ENGINEERING

Importers of used machinery

AWEA - CNC DOUBLE COLUMN MACHINING CENTER- LP-4033

Machine Name: AWEA - CNC DOUBLE COLUMN MACHINING CENTER- LP-4033

Manufacturer: AWEA

Model: LP-4033

Country: TAIWAN

Stock-no.: SEC00150

Price.: On Request

Technical Specifications

Make : AWEA

Model : LP-4033

Year : 2006

X-Axis Travel : 4,000 mm

Y-Axis Travel : 3,300 mm

Z-Axis Travel : 760 mm

Distance B/W Columns : 3,500 mm

Table Size : 4,020 × 2,400 mm

Max. Table Load : 15 Tons

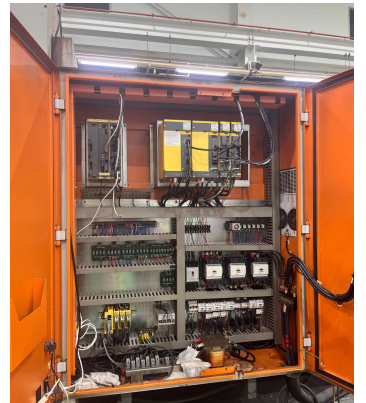
Spindle Nose to Table : 1,000 mm

Spindle Speed : 10,000 rpm

Spindle Motor : 22 / 26 kW

ATC Capacity : 60 Tools

Spindle Taper : BT-50



Regd. address

B69/A, 3rd Stage,
Peenya Industrial Estate,
Bangalore - 560058.

Warehouse

553, 5th Main,
Peenya 2nd Stage
Bangalore - 560058.

Registration

GST: 29ACHPS2669E1Z7
PAN: ACHPS2669E

Contact

info@satishengineering.com
+91 80 41272652/40942959
www.satishengineering.com